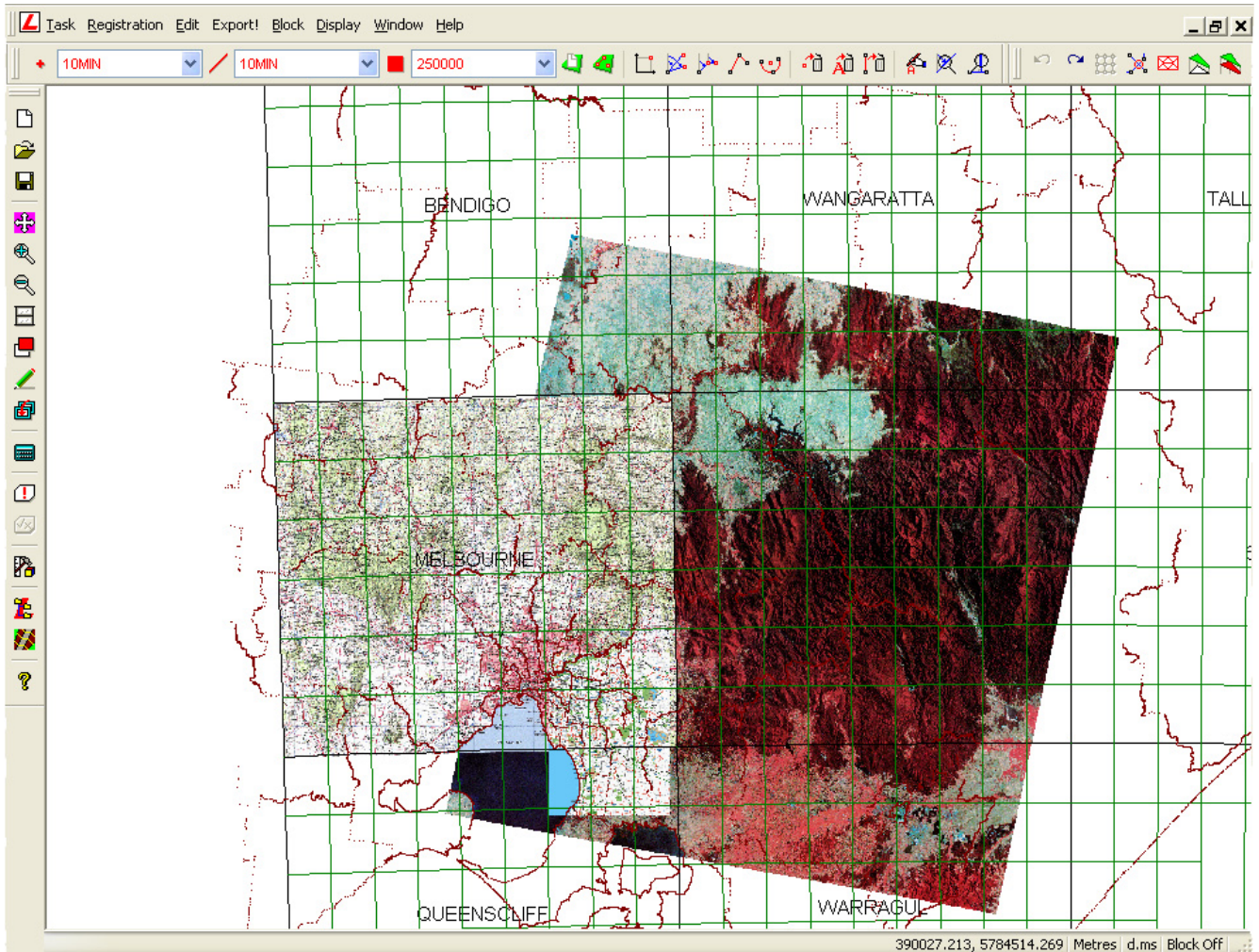


## LISCAD Background Images

### LISCAD presents a transformed image...

With the new Background Images module you can view your maps, plans and photographic imagery as a backdrop to your vector data.

**“Background Images” can be used to digitize information or utilized as a location guide for aerial photographs.**



### The benefits...

**FULLY SUPPORTS...**

most image file types including bmp, jpg, tif and png, as well as

**MRSID, ECW AND GEOTIFF IMAGES**

**NO SOFTWARE LIMITATION...**

to the size or number of images used.

**NUMEROUS IMAGES...**

can be displayed at any one time.

**POWERFUL AND SIMPLE...**

registration makes it easy to import the images into LISCAD's coordinate system utilizing one of the four image transformation types available.

**CONTROL THE ORDER...**

in which the images are displayed

**ON SCREEN DIGITIZING...**

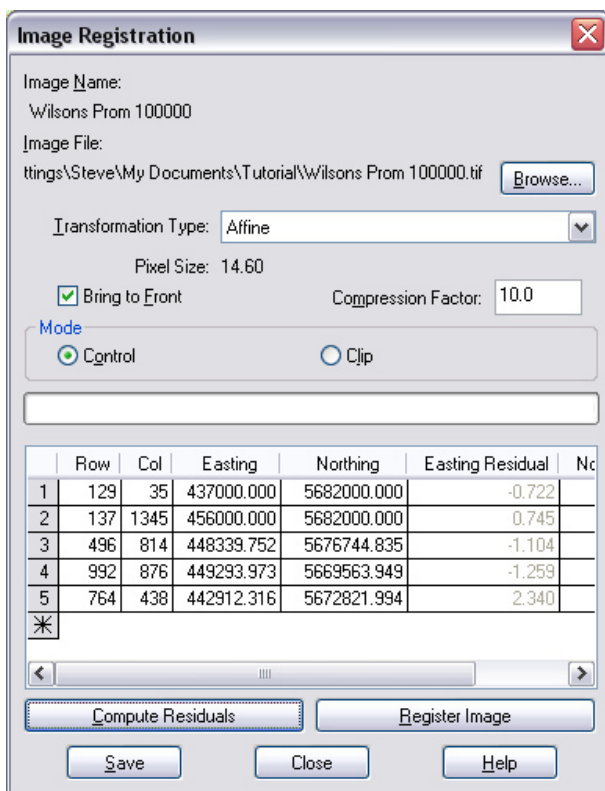
can be achieved using the images in conjunction with the Computations module.

### Background Image Registration

Before an image can be used in the background it must be registered with the coordinate system used by the SEE file.

Registration (georeferencing the image) requires control pixels in the raster image to be assigned co-ordinates that accord with the map datum being used.

Four image transformation techniques are available including Conformal and Affine as well as 2nd and 3rd Order Polynomial Transformations.



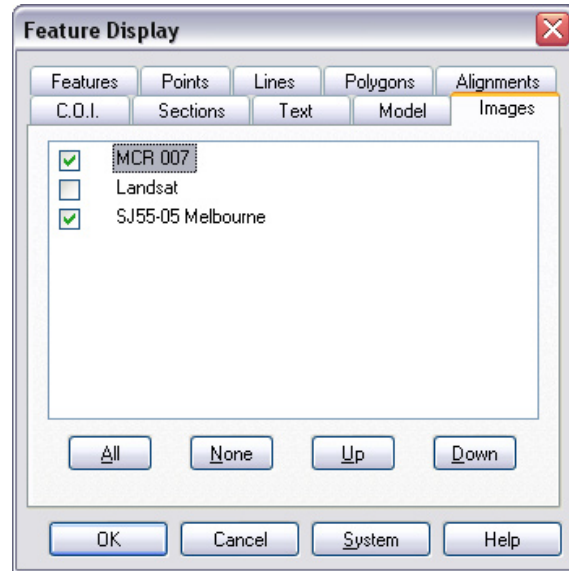
The original raster image is transformed to fit the map datum and the transformed image can then be displayed in the background that registers with the overlying data. If you are working with a MrSID, ECW or GeoTIFF image, the images, along with their georeferenced information are imported ready for transformation.

### Checking of Images

Once an image has been registered, the transformed image is copied into the SEE data file. Registration can be checked at any time against the original image file. This also allows for changes to the images size and location to be achieved.

### Display and Use of Images

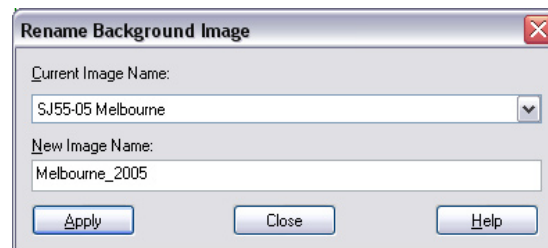
The images are controlled by using Display Features. When multiple images are being displayed concurrently, some images may overlap others and this can be managed by turning them on and off as well as setting the display order.



From here it is simple using LISCAD's existing computational functionality to digitize information directly from the imagery or check existing co-ordinates in the data file against the image.

### Deleting and Renaming Images

Images in the LISCAD data file can be easily renamed.



The ability to delete single and multiple images from the file is also available.

### Exporting of Images

Images transformed into the LISCAD database can then be exported to most image file types for importing into other systems